

# The DOVE-TALE

GUILD OF MAINE WOODWORKERS

VOLUME 16, 1ST. QUARTER

NEWSLETTER

MARCH 2024

---



The cover photo reflects a close-up view of the gate leg nesting to the bottom rail. As simple the table design may be, a few close fits need to be executed. This is a William & Mary period design table (1690+), a small table only 25" high and with leaves folded down only 11" wide. Within a one room cabin and after a meal's use, the table can be folded and moved to the side of the room and make space for other daily activity



(NOTE) This article was written and inserted in last year's 3rd quarter newsletter. But I had to rewrite the article because the SAPFM publisher could not produce quality photos from the old paper pictures (too grainy). I remade the table and photographed each phase again for print in this year SAPFM's quarterly newsletter. (distribution 1000+)

## CONTENT

- Page #1**    **Cover — Gate Leg Table (leg-closeup)**
- Page #2**    **On The Cover.        Content    Guild Statement**
- Page #3**    **Calendar of Events    Officers.    Board of Directors**
- Page #4**    **President's Message**
- Pages 5-6-7**    **January Meeting**
- Pages 8-9**        **February Meeting**
- Pages 10-11**    **March Quarter Meeting**
- Page 12**    **Sub-Group Review**
- Page 13**    **Gallery—Make a Podium (job)**

**STATEMENT:** All woodworkers, from beginners & hobbyists to professionals, are invited to join the Guild of Maine Woodworkers where individuals can meet and share their knowledge and skills. Monthly meetings include demonstrations, tool discussions and guest speakers as well as the popular "show & tell" where members show off their woodworking products, tools or gadgets. Meetings rotate around members shops. Maybe you will gain an idea for your shop. If you need help on a project the Guild is the place to be.

**GUILD Monthly Meetings held on third Tuesday evening beginning at 6:30 pm.  
Quarterly Meetings held on second Saturday beginning at 10 am.**

January	Monthly Meeting	Allen Armstrong	Portland	DONE
February	Monthly Meeting	Randy Mayse	Buxton	DONE
March	Quarterly Meeting	Tour to Doucette & Wolfe	shop	DONE
April	Monthly Meeting	Deb Silverman	Brunswick	
May	Monthly Meeting	Susan Chandler	Freeport	
June	Quarterly Meeting	TBD		
July-Aug.	Summer Schedule	TBD		
Sept.	Quarterly Picnic	Barbara White	Yarmouth	
October	Monthly Meeting	Deb Silverman	Brunswick	
November	Monthly Meeting	OPEN		
December	Quarterly Meeting	Wes Sunderland	W. Baldwin	

**E-mail meeting reminder sent one week prior to meeting date with directions.**

**GUILD OFFICERS**

<b>President</b>	<b>Wes Sunderland</b>	<b>Secretary</b>	<b>Randy Mayse</b>
<b>Vice Pres.</b>	<b>Jim Hanscom</b>	<b>Treasurer</b>	<b>Jim Hanscom</b>

**BOARD OF DIRECTORS**

<b>2024</b>	<b>2025</b>	<b>2026</b>
<b>Frank Southard</b>	<b>Rolf Dries</b>	<b>Robert Cort</b>
<b>Barbara White</b>	<b>Randy Mayse</b>	<b>Susan Chandler</b>
<b>Mark Tschiegg</b>	<b>Deborah Silverman</b>	<b>Wes Sunderland</b>

The Guild of Maine Woodworkers has maintained a steady path of activities and membership. Thinking back to when the Guild began, 1992, there were 9 individuals that came together in an activity and initiated this club. They were all professional woodworkers, that is making a living by crafting wood furniture. Memory recalls that a few others joined, including myself in 1993, and the group was about 15 strong. We experienced a “turnover” with members. Several would join, learn the requirements to sell and do trade shows, and after about 3 years, would go it on their own. The one favorable memory was there were a few great outstanding individuals that became woodworkers, but they left due to many varied reasons.

Here we are in year 2024. The Guild did experience some rocky roads. Membership did drop to about 5 individuals during about 2009, and we did ventured again to take up trade shows. Now the Guild is strong and consists mostly with hobbyists that do not need trade shows to further their woodwork interests. Eventually the majority of individuals experience that inner urge of a need to make with the hands. You could refer to it as an urge to innovate an art by crafting and fortunately many choose wood to craft that art. The reward is self satisfaction.

During the 2023 October meeting, a few members of the Guild expressed a need to expand with computer numerically controlled (CNC) skills as it may be applied to wood and crafting. This tangent activity was healthy to the Guild. Our membership was continuing to grow and our program needed a boost to serve its members and fulfill their search for satisfaction in crafting. Then during the annual December meeting, discussion ventured to form a more tangent activity and was labeled as “sub-groups”. The formation relied on any individual expressing a direction and rally a few others to join. These members had like interests in the activity. The nucleus is a mutual bonding without an appointed leader individual. The real direction comes thru an organizer to communicate dates and meeting locations. Content of the sub-group flows thru common interests as expressed within a group’s meeting.

Currently during April 2024, there are three sub-groups in operation. The CNC group was first and has most participants. A tool making sub-group formed with the interest to not only make woodworking tools but to restore and repair old tools. And the third and newest group is the “beginners & intermediate group” (B.I.G.). The direction of these members is to become more informed of woodworking skills, machinery knowledge, hand tool use, and intelligent skills involved within the working of wood crafting. This group has deep importance. Many new members come into the Guild to learn as a novice, or their status of working wood is somewhere within the many layers of crafting. I can vision the B.I.G. sub-group shall establish a solid position in the mission activity of The Guild of Maine Woodworkers. **Pg.#4** WES



Allen Armstrong's shop is in his cellar, rather large but quite full with equipment. Premeeting gathering is to enjoy food served, then attending to meeting agenda.

Lower: View of the shop reveals several pieces of equipment and good duct work to remove waste. Not all shops have a bicycle hanging from the ceiling.





Show & Tell: Mark Tschiegg



Barbara White



Both: Art Fahie exhibiting two clocks with crafted outer case.

Both: Deb Silverman showing curved sets of drawers shaped with her CNMC machine





**Show & Tell:**

Top left: Randy Mayse exhibited several small turned ornaments with the technique known as “inside-out turning”.

Top right: Steve Smith with a fabrication to hold varied sizes of sockets.

**Woodwork demonstration:**

John Vogt assisted Allen Armstrong to produce as demonstration of router safety and some uses with the router.

Top: John showing a router guide attachment and other equipment.

Allen conducting a demo of router table setup and safely approaching a cut.

Many facets were discussed or demonstrated that are common uses for router cutting in the hobbyist’s shop.



Group gathering and food before meeting. Randy's shop is spacious and well equipped. Randy makes a Shaker furniture product line.

Beginning the meeting







**Show & Tell:** Steve Smith



Gene Kirekpatrick



**Meeting demonstration:**

Randy discussed his involvement in Shaker furniture crafting.

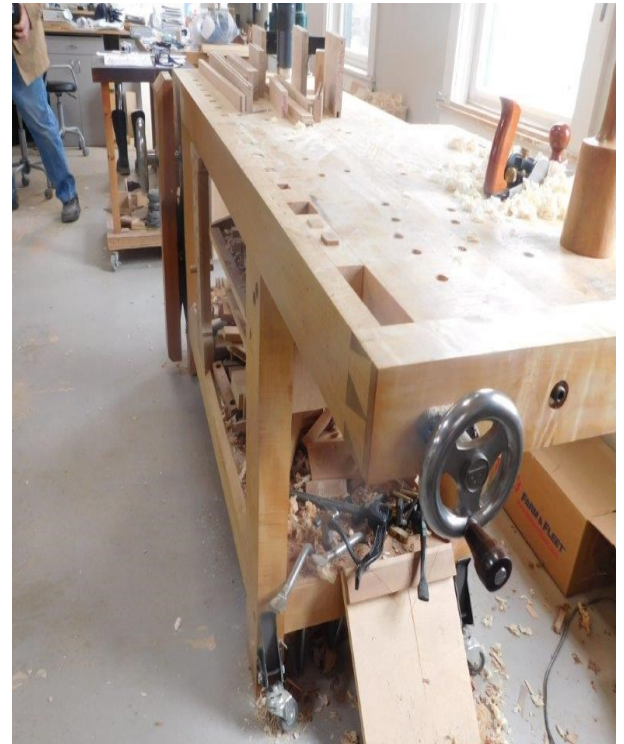
He produced a Shaker style peg board with lathe turned pegs.



More discussion about attaching pegs to the board.

Mathew Wolfe hosted this visit and Guild members experienced the machine/tool facility as well as

the display of 18th century furniture.



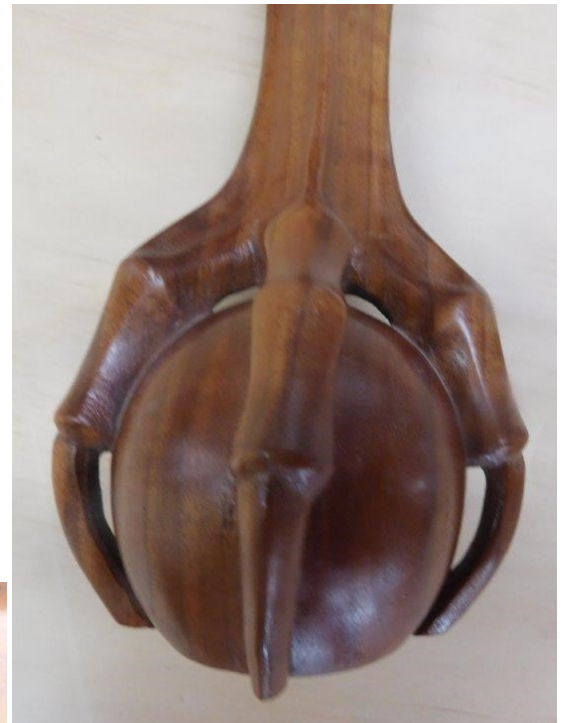
Above: one of three work benches



Left: Start of shop tour and viewing of machinery and shop set-up. We enjoyed a lengthy discussion of Matt's shop use.

Set-up of sharpening bench facility.





Display of furniture forms and carvings applied to furniture.

Corner chair & Chippendale chair.

Two fan carvings of two distinct different techniques.

Carved "pierced" claw & ball foot. An exceptional example to this form of ball gripped by talons.

Computer Numerically Controlled (CNC) Group: The CNC group has experienced many meetings since October. Several of the members have the ability to contribute skill info as they specialize in a particular maneuver with the computer equipment. The use of CNC technology provides the user to execute exacting detailed cuts with wood not only to cut a calculated size and shape of an item piece but also to engrave detailed design cuts to include print on wood. The limit of CNC use is how far the imagination allows you to venture.

---

Beginner and Intermediate Group (B.I.G.) : The BIG group is new and had its first orientation meeting. Thirteen members attended to contribute ideas to the goals for the group.

Some goal items are:

1. shop setup & organization	2. woodworking tips & tricks
3. Joinery	4. tool safety & maintenance
5. Dovetails & mortise and tenons	6. sanding
7. inlay & marquetry	8. Understanding wood movement
9. sharpening	10. Math in woodworking

Undoubtably, this is just skimming the possible topics but represents a solid direction. The math in woodwork topic has depth beyond measuring and dividing into equal parts. As the group ventures further, other members may be attracted to this much in demand group. Barbara White & Susan Chandler has initiated this group's start with well intended direction.

---

Tool Making Group: This collection of members posses an ambition to hand make tools mostly from wood and to repair & restore old tools. The group consists of four members.

It is clearly understood that to make your own tools is NOT SAVING MONEY when you place a cost on your own time in labor. When time is free to you, then it is worth to make your tools.

The gain and pleasure is "you made it" and "satisfaction of achievement". It's rally yours !

This group had a whimsical beginning with "what tools to make". It's been kept simple.

Starting tool choice have been a marking knife and a scratch awl. A few more tools will follow. Then, a big project will be to make bar clamps. Every woodworker needs bar clamps. And making these clamps will most likely be 10 items of one size. An effort to keep purchased hardware to a minimum cost is important. Proto type bar clamp have been worked to establish a good functional clamp design to grip the wood item and have the wooden bar withstand the forces.

The group meets once monthly. Plans are formed at meetings and the making of tools are at the member's home shop. If you have an interest, 1st Tuesday of each month is meeting time.

Podium — commissioned for the Portland Country Club (make 2 )



Front & side view only oil finish



back interior view with lift up shelf



This shows the ask wood without a hard oil finish.

The country club provided the ash wood from an old tree that was cut down 4 years before and air dried. There was grain contrast between heartwood and sap wood. All solid wood except the inner shelves were birch plywood.



Two separate podiums were constructed. Page #13